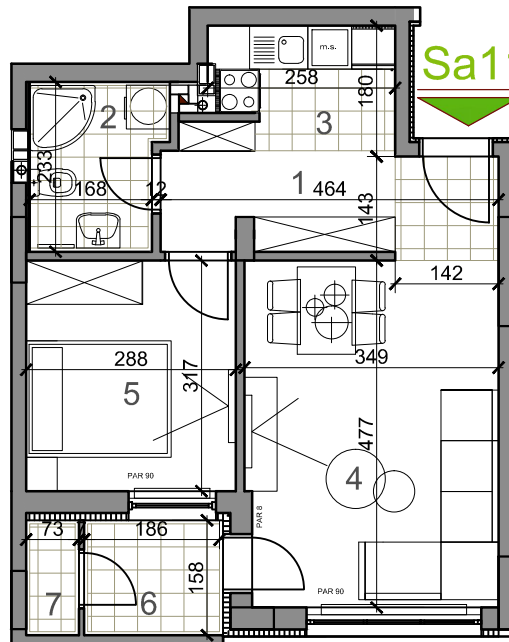
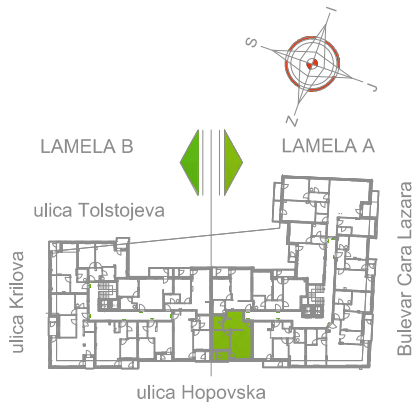


LAMELA A - DRUGI SPRAT - STAN Sa 11



dvosoban stan

LAMELA A	osnovna površina [m ²]	korisna površina [m ²]
Sa11 = 43.81 m²		
DVOSOBAN STAN		
1 PREDSOBLJE	6.64	6.45
2 KUPATILO	4.12	4.00
3 KUHINJA	4.00	3.88
4 DNEVNA SOBA	16.87	16.38
5 SOBA	9.24	8.97
6 LODA	3.02	3.02
7 H. OSTAVA	1.14	1.11
UKUPNO Sa11:	45.03	43.81