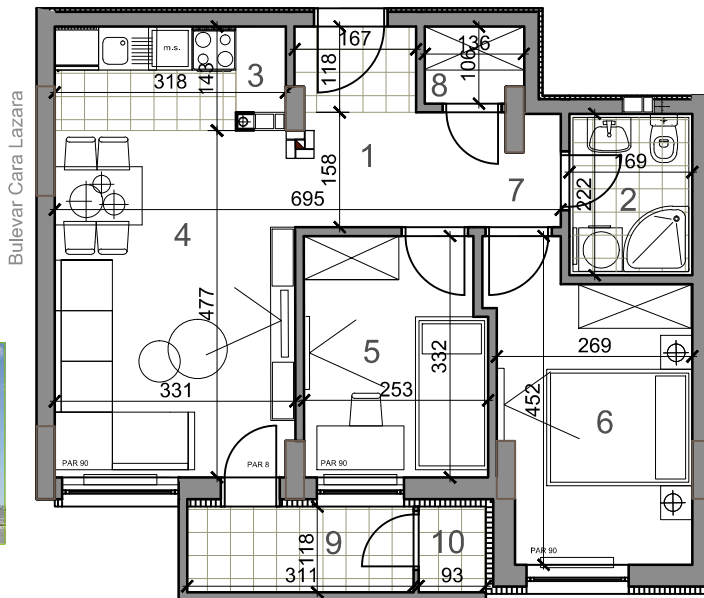
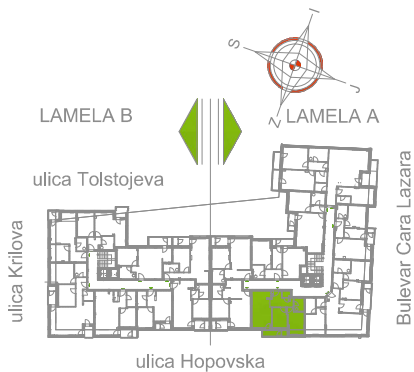


LAMELA A - PRVI SPRAT - STAN Sa 4

Sa4-55.03 m²



trosoban stan

	osnovna površina [m ²]	korisna površina [m ²]	
LAMELA A			
Sa4 = 55.03 m²			
TROSOBAN STAN			
1	PREDSOBLJE	4.41	4.28
2	KUPATILO	3.75	3.64
3	KUHINJA	4.37	4.24
4	DNEVNA SOBA	15.79	15.33
5	SOBA	8.28	8.04
6	SOBA	10.85	10.53
7	DEGAZMAN	2.99	2.90
8	GA RDEROBA	1.39	1.35
9	TERASA	3.66	3.66
10	H.OSTAVA	1.09	1.06
UKUPNO Sa4:		56.57	55.03