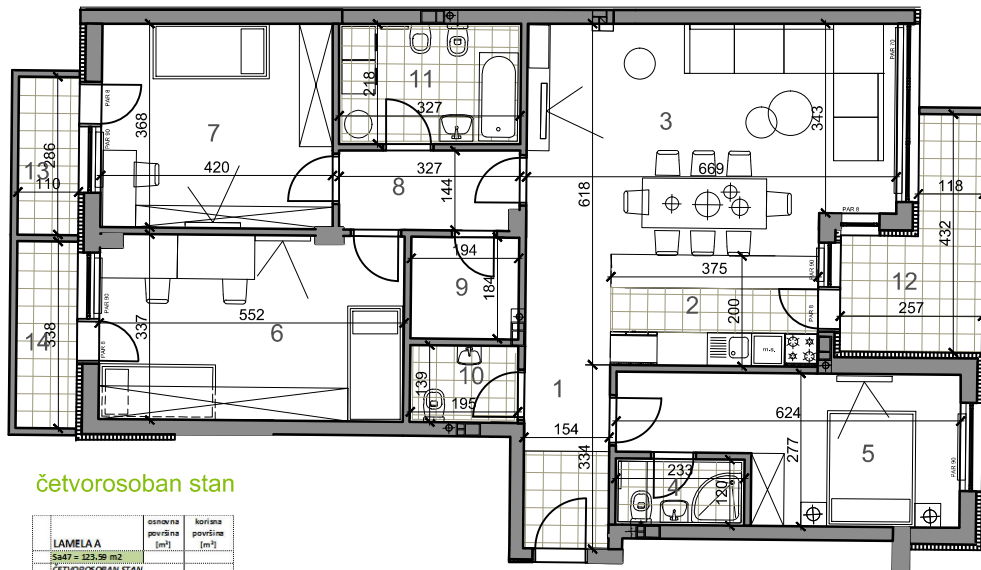
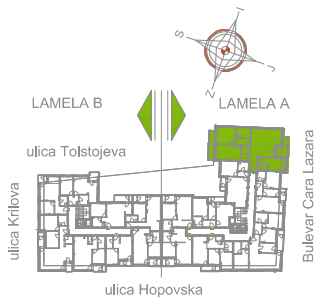


## LAMELA A - ŠESTI SPRAT - STAN Sa 47



četvorosoban stan

LAMELA A	osnovna površine [m <sup>2</sup> ]	korisna površine [m <sup>2</sup> ]
<b>Sa47 = 123.59 m<sup>2</sup></b>		
<b>ČETVOROSOBAN STAN</b>		
1. PRIZEMLJE	7.18	6.97
2. KUHINJA	7.56	7.34
3. DNEVNA SOBA	28.34	27.51
4. SPUPATLJ	2.79	2.71
5. SOBA	14.17	13.76
6. SOBA	18.42	17.88
7. SOBA	15.49	15.04
8. TOALET	4.54	4.50
9. BOSTAVA	3.53	3.40
10. WC	2.72	2.64
11. SPUPATLJ	7.15	6.84
12. SOBA	8.02	8.00
13. BALKON	3.14	3.14
14. BALKON	3.72	3.72
<b>UKUPNO Sa39</b>	<b>118.85</b>	<b>118.98</b>

Sa47-123.59 m<sup>2</sup>