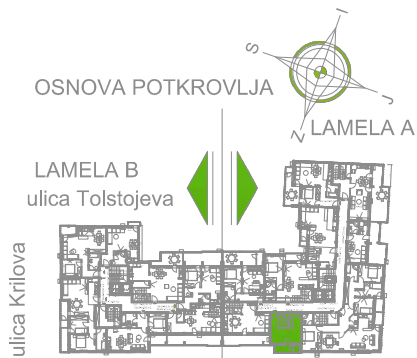
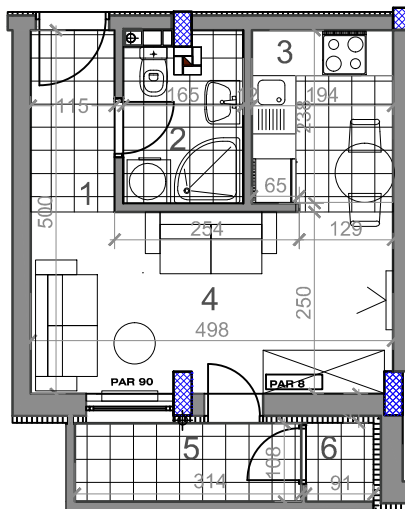


LAMELA A - POTKROVLJE - STAN Sa 52



Sa52-27,16 m²



garsonjera

| | osnovna površina [m ²] | korisna površina [m ²] |
|-----------------------------|------------------------------------|------------------------------------|
| LAMELA A | | |
| Sa52 = 27,16 m ² | | |
| GARSONJERA | | |
| 1 PREDORJE | 2,87 | 2,79 |
| 2 KUPATILO | 3,52 | 3,42 |
| 3 KLUPINJA | 4,76 | 4,62 |
| 4 DNEVNI BORAVAK | 12,32 | 11,96 |
| 5 TERASA | 3,39 | 3,39 |
| 6 H.OSTAVA | 1,01 | 0,98 |
| UKUPNO Sa52 | 27,87 | 27,16 |