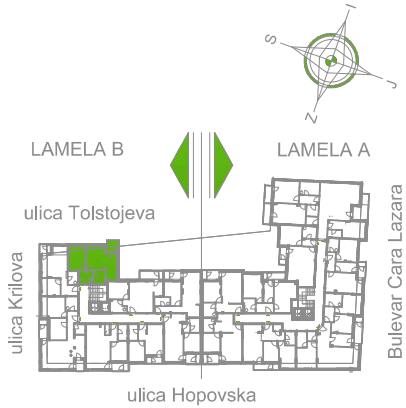
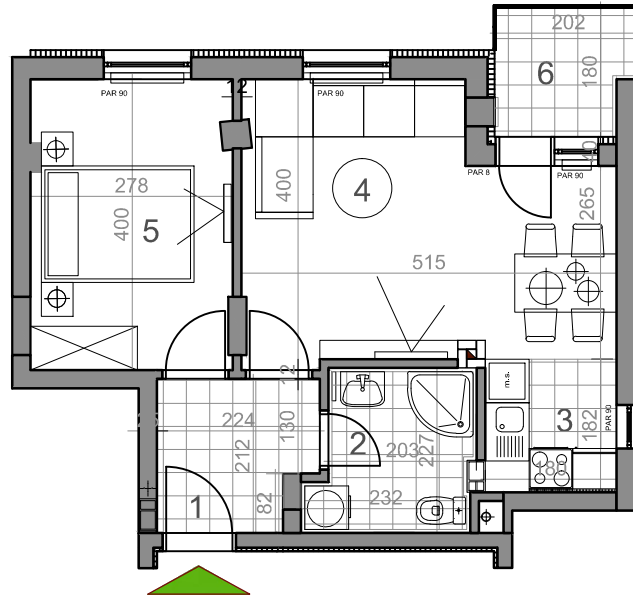


LAMELA B - PRVI SPRAT - STAN Sb 1



Sb1



Sb1-43,10 m²

dvosoban stan

	osnovna površina [m ²]	korisna površina [m ²]
LAMELA B		
Sb1 = 43.10 m²		
DVOSOBAN STAN		
1. PREDSOBLJE	4.32	4.19
2. KUPATILO	4.77	4.63
3. KUHINJA	3.35	3.25
4. DNEVNA SOBA	17.46	16.95
5. SOBA	11.04	10.72
6. LOBA	3.36	3.36
UKUPNO Sb1	44.29	43.10