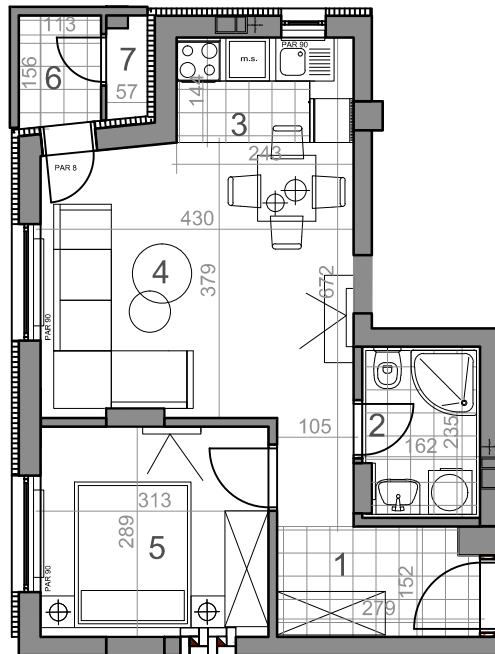
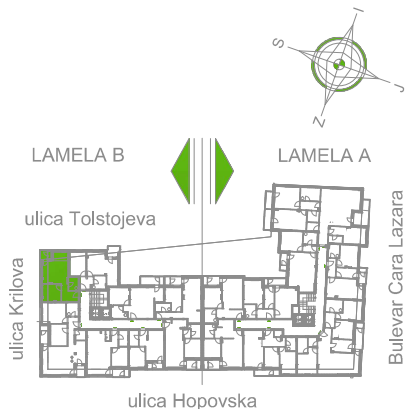


LAMELA B - DRUGI SPRAT - STAN Sb 10



Sb10-39,52 m²

dvosoban stan

LAMELA B	osnovna površina [m ²]	korisna površina [m ²]
Sb10 = 39,52 m²		
DVOSOBAN STAN		
1 PREDSOBLJE	5,67	5,50
2 KUPATILO	3,71	3,60
3 KUHINJA	3,56	3,46
4 DNEVNA SOBA	16,13	15,66
5 SOBA	9,15	8,88
6 LODA	1,69	1,69
7 H.OSTAVA	0,75	0,73
UKUPNO Sb10:	40,65	39,52

LAMELA B - DRUGI SPRAT - STAN Sb 10