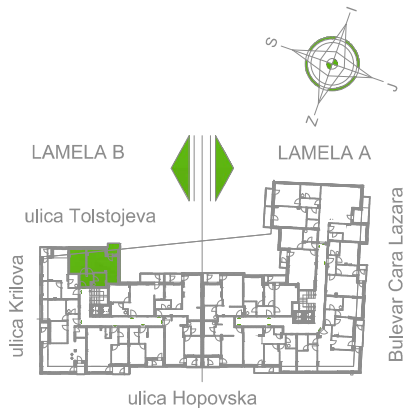
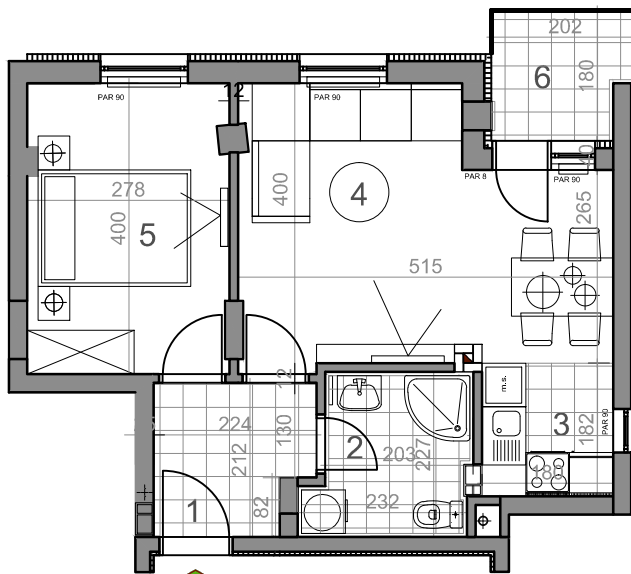


LAMELA B - TREĆI SPRAT - STAN Sb 17



Sb17



dvosoban stan

LAMELA B		osnovna površina [m ²]	korisna površina [m ²]
Sb17 = 43.10 m²			
DVOSOBAN STAN			
1	PREDSOBLJE	4.32	4.19
2	KUPATILO	4.77	4.63
3	KUHINJA	3.35	3.25
4	DNEVNA SOBA	17.46	16.95
5	SOBA	11.04	10.72
6	LOBA	3.36	3.36
UKUPNO Sb17		44.29	43.10

Sb17-43,10 m²