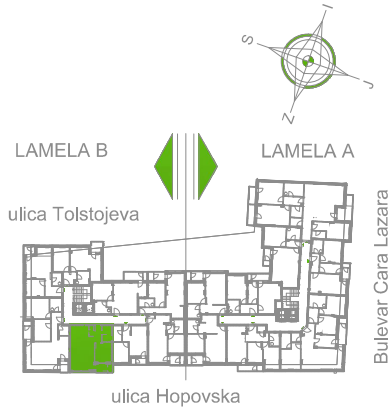
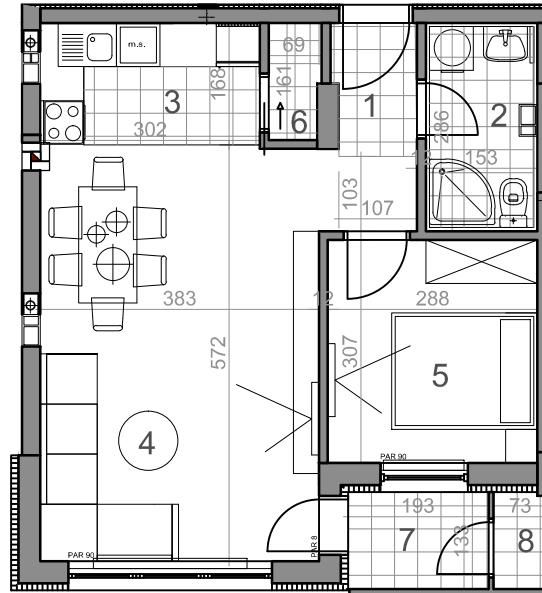


LAMELA B - ČETVRTI SPRAT - STAN Sb 27

Sb27-47,11 m²



Bulevar Cara Lazara



dvosoban stan

LAMELA B	osnovna površina [m ²]	korisna površina [m ²]
Sb27 - 47,11 m²		
DVOSOBAN STAN		
1 PREDSOBLJE	3.48	3.38
2 KUPATILO	4.38	4.25
3 KUHINJA	4.93	4.79
4 DNEVNA SOBA	22.08	21.44
5 SOBA	8.94	8.68
6 OSTAVA	1.09	1.06
7 LOBA	2.57	2.57
8 H.OSTAVA	0.97	0.94
UKUPNO Sb27	44.96	47.11

LAMELA B - ČETVRTI SPRAT - STAN Sb 27