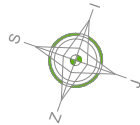
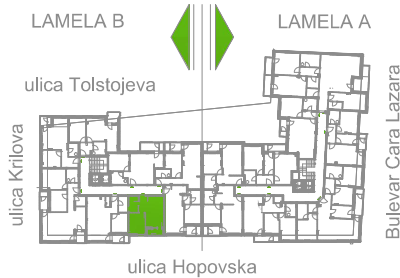


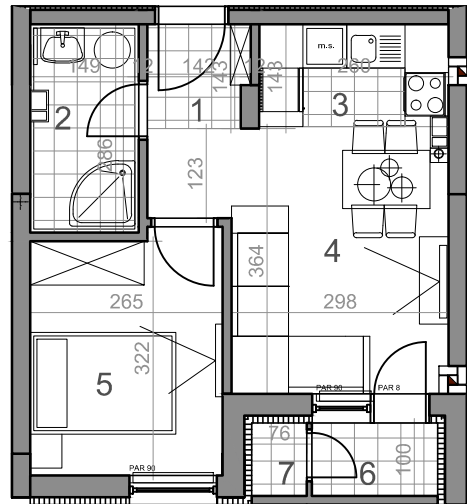
LAMELA B - ČETVRTI SPRAT - STAN Sb 28



Sb28-32,34 m²



Sb28



dvosoban stan

	osnovna površina [m ²]	korisna površina [m ²]
LAMELA B		
Sb28 = 32,34 m ²		
DVOŠOBAN STAN		
1 PREDŠOBLJE	1,96	1,90
2 KUPATILO	4,15	4,03
3 KUHINJA	3,68	3,57
4 DNEVNA SOBA	12,16	11,81
5 SOBA	8,83	8,57
6 LODA	1,73	1,73
7 H.OSTAVA	0,75	0,73
UKUPNO Sb28	33,26	32,34