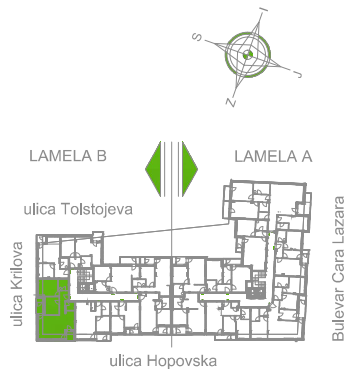


## LAMELA B - ŠESTI SPRAT - STAN Sb 39



LAMELA B

LAMELA A

ulica Tolstojeva

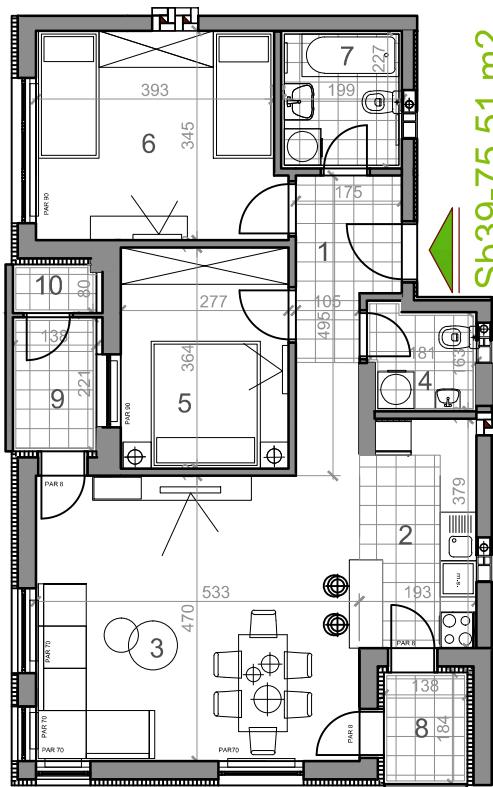
ulica Krilova

ulica Hopovska

Bulevar Cara Lazara



Sb39



Sb39-75,51 m<sup>2</sup>

trosoban stan

	osnovna površina [m <sup>2</sup> ]	korisna površina [m <sup>2</sup> ]
<b>LAMELA B</b>		
<b>Sb39 = 75,51 m<sup>2</sup></b>		
<b>TROSOBAN STAN</b>		
1 PREDOBILJE	6,95	6,36
2 KUHINJA	7,14	6,93
3 DNEVNI BORAVAK	28,54	24,80
4 WC	2,97	2,86
5 SOBA	20,19	9,89
6 SOBA	14,04	13,53
7 KUPATILJ	4,90	4,37
8 LODA	2,54	2,54
9 LODA	3,05	3,05
10 H. OSTAVA	1,06	1,06
<b>UKUPNO Sb39</b>	<b>77,61</b>	<b>75,51</b>

LAMELA B - ŠESTI SPRAT - STAN Sb 39