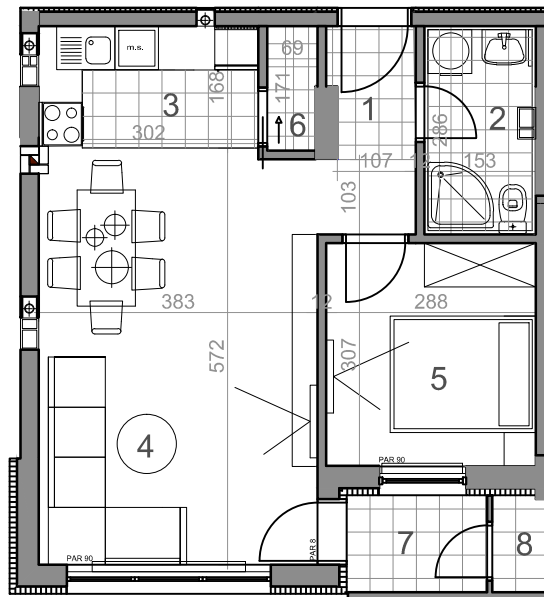
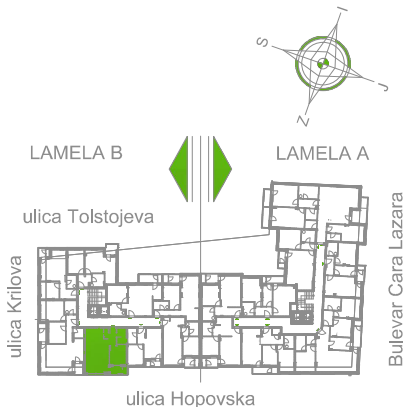


LAMELA B - PRVI SPRAT - STAN Sb 4

Sb4-47,10 m²



dvosoban stan

	osnovna površina [m ²]	korisna površina [m ²]
LAMELA B		
Sb4 = 47.10 m²		
DVOSOBAN STAN		
1	PREDOBLJE	3.48 / 3.38
2	KUPATILO	4.38 / 4.25
3	KUHINJA	4.93 / 4.79
4	DNEVNA SOBA	22.01 / 21.37
5	SOBA	8.94 / 8.68
6	OSTAVA	1.15 / 1.12
7	LOBA	2.57 / 2.57
8	H.OSTAVA	0.97 / 0.94
UKUPNO Sb4		48.44 / 47.10