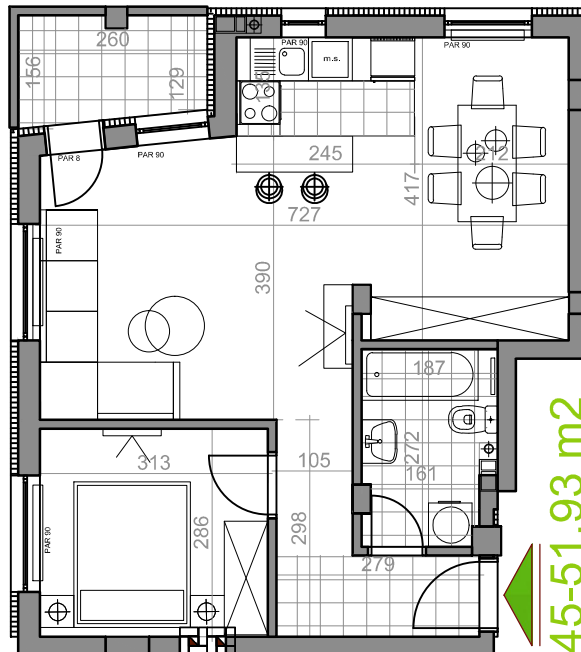
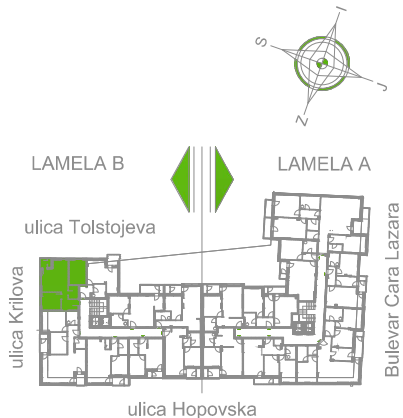


LAMELA B - POTKROVLJE - STAN Sb 45



Sb45-51,93 m²

dvosoban stan

LAMELA B	osnovna površina [m ²]	korisna površina [m ²]
Sb45 = 51.93 m²		
DVOSOBAN STAN		
1 PREDSOBLJE	5,07	4,92
2 KUPATILO	4,64	4,50
3 KUHINJA	3,37	3,27
4 DNEVNA SOBA	27,59	26,79
5 SOBA	9,05	8,79
6 LODA	3,66	3,66
UKUPNO Sb-45	53,38	51,93

LAMELA B - POTKROVLJE - STAN Sb 45