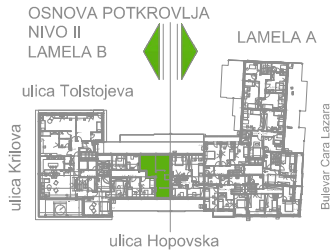
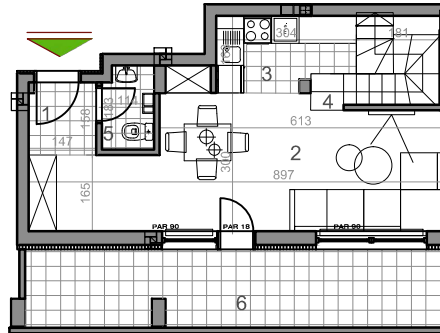


# LAMELA B - POTKROVLJE - STAN Sb 49 - DUPLEX



## OSNOVA POTKROVLJA, NIVO I

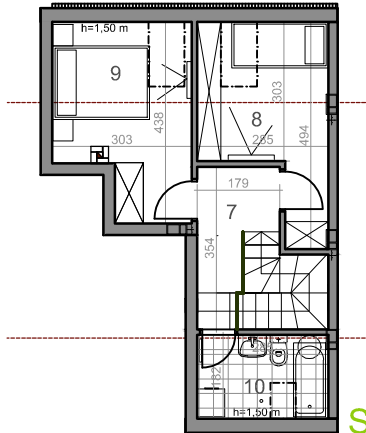


trosoban stan

LAMELA B	osnovna površina [m <sup>2</sup> ]	korisna površina [m <sup>2</sup> ]
90m <sup>2</sup> - 105,53 m <sup>2</sup>		
<b>TROSOBAN STAN</b>		
1. PREDOBILJE	2,29	2,22
2. DNEVNI BORAVAK	22,96	22,29
3. KUHAJNJA	9,71	9,54
4. ISTEPENIŠTE	4,17	4,05
5. WC	1,83	1,78
6. TERASA	16,13	16,13
<b>UKUPNO Sb49/1</b>	<b>59,09</b>	<b>58,08</b>

Sb49/1 -52,01 m<sup>2</sup>

## OSNOVA POTKROVLJA, NIVO II



7. DOKAZNAN	4,54	4,41
8. ISOBA	11,33	11,00
9. ISOBA	10,38	10,08
10. KUPATILO	5,08	5,03
<b>UKUPNO Sb49/2</b>	<b>31,41</b>	<b>30,52</b>

Sb49/2 -30,52 m<sup>2</sup>

Sb49 ukupno -82,53 m<sup>2</sup>