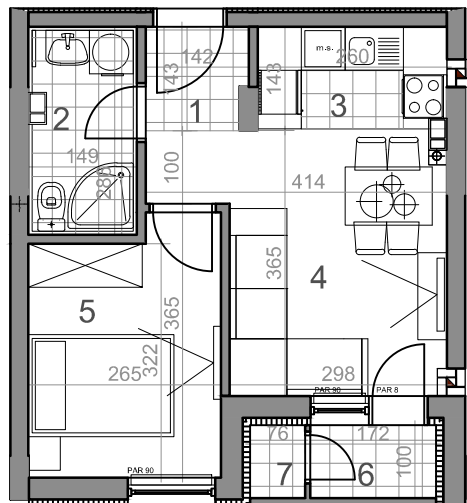
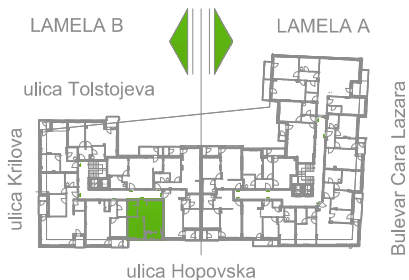


LAMELA B - PRVI SPRAT - STAN Sb 5



Sb5-32,53 m²



dvosoban stan

	osnovna površina [m ²]	korisna površina [m ²]
LAMELA B		
Sb5 = 32.53 m²		
DVOSOBAN STAN		
1 PREDSOBLJE	1.96	1.90
2 KUPATILO	4.26	4.14
3 KUHINJA	3.72	3.61
4 DNEVNA SOBA	12.02	11.67
5 SOBA	9.01	8.75
6 LOĐA	1.73	1.73
7 H.OŠTAVA	0.75	0.73
UKUPNO Sb5	33.45	32.53