

# LAMELA B - POTKROVLJE - STAN Sb 51 - DUPLEX



## četvorosoban stan

LAMELA B	osnovna površine [m <sup>2</sup> ]	korisne površine [m <sup>2</sup> ]
<b>Sb51/1 = 110,40 m<sup>2</sup></b>		
<b>ČETVOROSOBAN STAN</b>		
1 PREDSOBLJE	4,00	3,88
2 DNEVNA SOBA	27,00	26,24
3 KUHNJA	9,85	9,56
4 SOBLJA	2,80	2,74
5 SPERVALE	4,75	4,61
6 WC	2,30	2,23
7 TERASA	9,21	9,21
<b>UKUPNO Sb51/1</b>	<b>59,96</b>	<b>58,48</b>

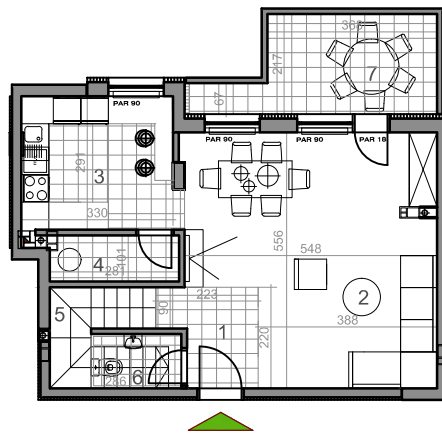
3 BGAZMAN	8,86	8,51
9 SOBA	14,96	14,84
10 SOBA	10,12	9,83
11 SOBA	11,56	11,29
12 KUPATILO	7,84	7,42
<b>UKUPNO Sb51/2</b>	<b>51,40</b>	<b>51,92</b>

Sb51 ukupno - 110,40 m<sup>2</sup>

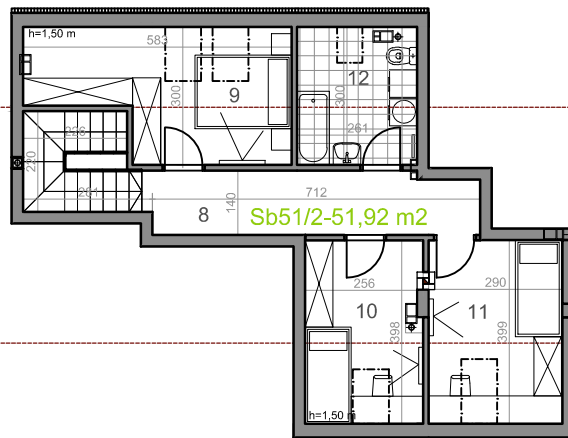


OSNOVA POTKROVLJA, NIVO I

OSNOVA POTKROVLJA, NIVO II



Sb51/1-58,48 m<sup>2</sup>



LAMELA B - POTKROVLJE - STAN Sb 51-DUPLEX

