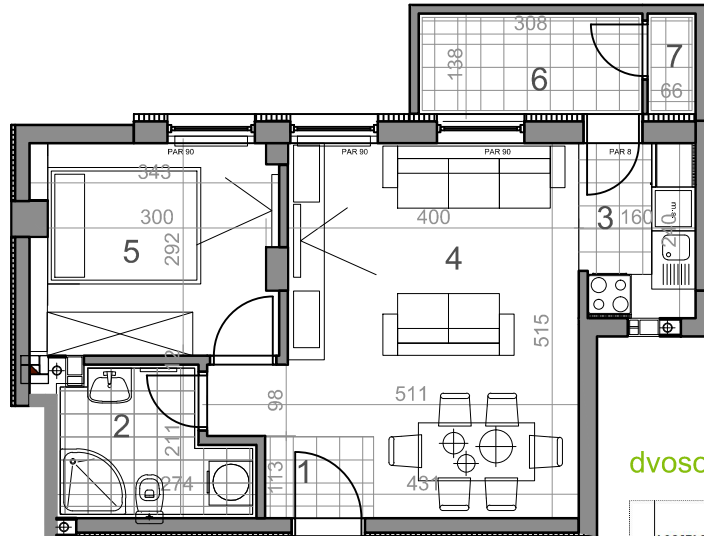
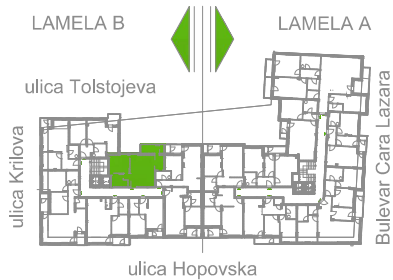


LAMELA B - PRVI SPRAT - STAN Sb 8



dvosoban stan

	osnovna površina [m ²]	korisna površina [m ²]
LAMELA B		
Sb8 = 44.47 m²		
DVOSOBAN STAN		
1 PREDSOBLJE	3.83	3.72
2 KUPATILO	4.79	4.65
3 KUHINJA	3.77	3.66
4 DNEVNA SOBA	18.43	17.89
5 SOBA	9.70	9.42
6 LOBA	4.25	4.25
7 H.OSTAVA	0.91	0.88
UKUPNO Sb8	45.68	44.47

Sb8-44,47m²