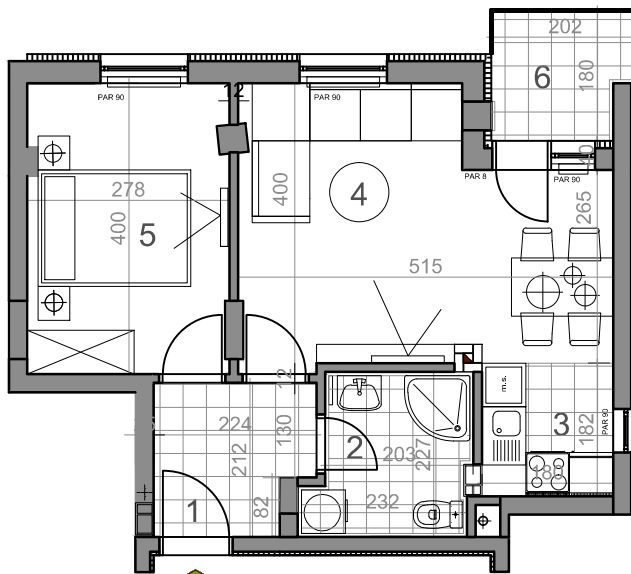
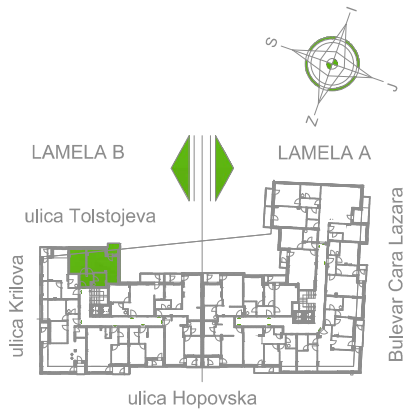


LAMELA B - DRUGI SPRAT - STAN Sb 9



dvosoban stan

LAMELA B		osnovna površina [m ²]	korisna površina [m ²]
Sb9 = 43,10 m ²			
DVOŠOBAN STAN			
1	PREDSOBLJE	4,32	4,19
2	KUPATILO	4,77	4,63
3	KUHINJA	3,35	3,25
4	DNEVNA SOBA	17,46	16,95
5	SOBA	11,04	10,72
6	LODA	3,36	3,36
UKUPNO Sb9:		44,29	43,10

Sb9-43,10 m²